

iRemoter™ for iPal® User Manual

1. Introduction

AvatarMind's iRemoter can be used to remotely control one or more iPal robots which are connected to the same local WiFi network. Using iRemoter you can move iPal around, start and stop songs and stories, change expressions, make poses, speak phrases, and much more. If multiple iPals are connected to iRemoter at the same time, they will be controlled simultaneously. You can even create a synchronized dance activity. Here is an example

<https://www.youtube.com/watch?v=rmR6zXJOGDY>

2. Requirements

To use iRemoter you will need a basic Android tablet with an 8" screen or larger. It should have a recent version of Android, preferably 6.0 or later. An Android phone with a large screen or a tablet with a smaller screen may also work if you do not have a tablet with a larger screen

The most important thing to remember when using iRemoter is that iRemoter and the iPal it controls **must** be on the same local WiFi network. Most of the time this is the problem if iRemoter does not seem to work. A MiFi, iPhone hotspot, or a local WiFi network in your home or building, should work.

3. Installing iRemoter

The first step is to install the iRemoter apk on your device. Download from this link

<https://www.dropbox.com/sh/7rtzxezpsrsss5q/AAC4OfQyyQrsE9ThIwJwUKmZa?dl=0>

The iRemoter apk is not on the Google Play store, so you will have to use other methods to install. Two methods are listed below.

In both cases **you will need to connect a USB charger cable between your Windows PC and your tablet.** In some cases you may also need to enable USB debugging on your tablet. See the appendix and/or search the internet for instructions for how to do this for your device.

1. Use a 3rd party app to install. One that we suggest is MobileGo. There are versions for both Windows and the Mac

<https://www.wondershare.com/mobile-phone/android-app-installer.html>

2. Install using the adb tool in the command prompt window of a Windows

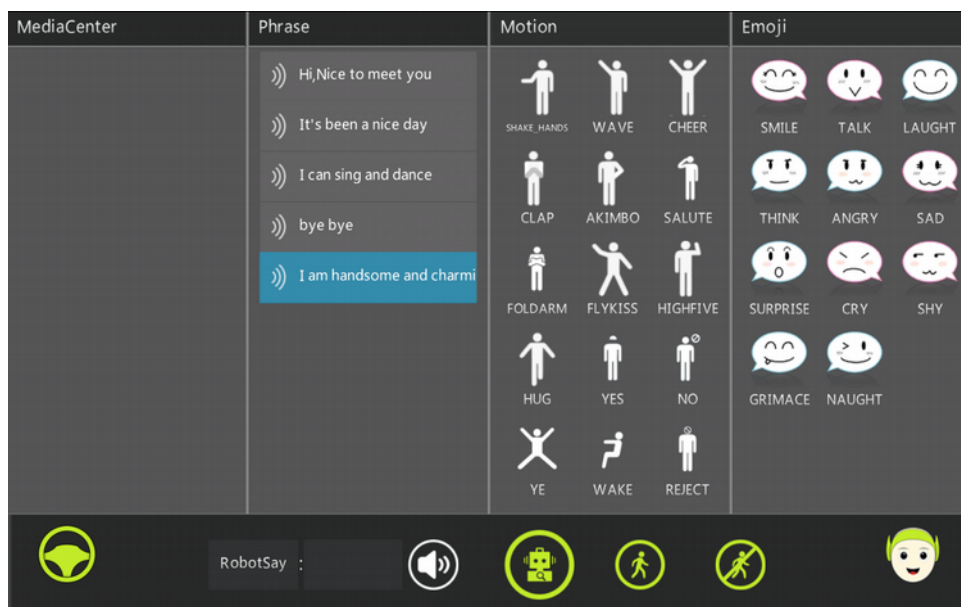
PC as

C:>adb install iRemoterEN.apk


Note: instead of just using “iRemoterEN.apk” in the above adb command, in general you will have to supply the full path to where iRemoterEN.apk is located on you PC.

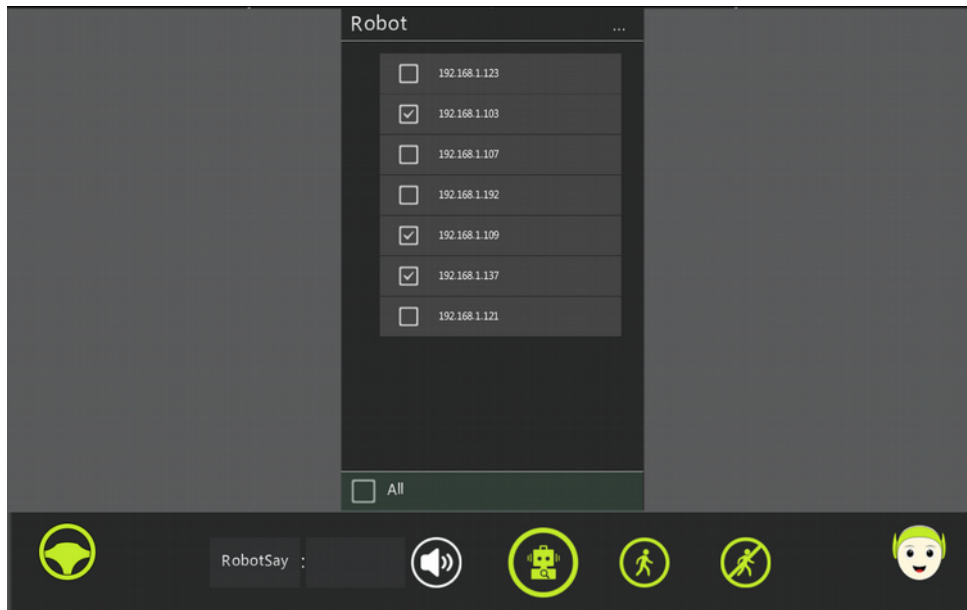
4. Getting Started

Now that it is installed on your device, you can start iRemoter. Look for its icon in the Apps section of your tablet and select. The following screen will appear.




Now make sure your iPal and tablet are connected to the same local WiFi network. This is critical.

Touch  and a screen like this appears



This shows a list of the robots that iRemoter finds on the local network. Click the boxes for all the robots you want to control. If you have only one iPal you will see only one entry. Click the box for that entry. If no robots appear then either the robots are not on the same local WiFi network as the tablet, or the WiFi network is too broad to support the discovery process.

Touch  again and this screen appears.



If your tablet has connected successfully to iPal you will see songs and stories appear in the left-hand panel. If you don't see them, go back and check that the tablet and iPal are on the same local WiFi network

In all the columns you can scroll down to find additional options and content by swiping up or down.


5. Using iRemoter


Once you see the screen above the rest is easy and intuitive.

To play a **song** or **story** simply touch its icon. To stop just touch the icon again.

To make iPal **pose** just touch one of the poses in the 2nd to right column. **Let one pose finish before starting another.**



To make iPal change **expressions** just choose one in the rightmost column

To move iPal hold down  with your finger and move up and down, or right and left. (note: iPal moves best on a hard surface or short carpet)

To move iPal's head do the same thing using 


To make iPal move forward in a straight-line touch . To stop touch 

To speak a phrase simply touch one of the phrases in the second to left column

- To add a phrase touch in the box to the right of . A keyboard will appear and you can enter a new phrase. When finished touch OK to the right of the new phrase. Then to activate the phrase touch 
- To delete a phrase swipe left.
- To change the order of the phrases put your finger on a phrase and move right and then up or down until you find the new position you want and release.

Note: You can also “stack up” phrases, which can be a very useful feature. If you rapidly touch several phrases in the order you want them said, iPal will speak them one after the other in sequence.

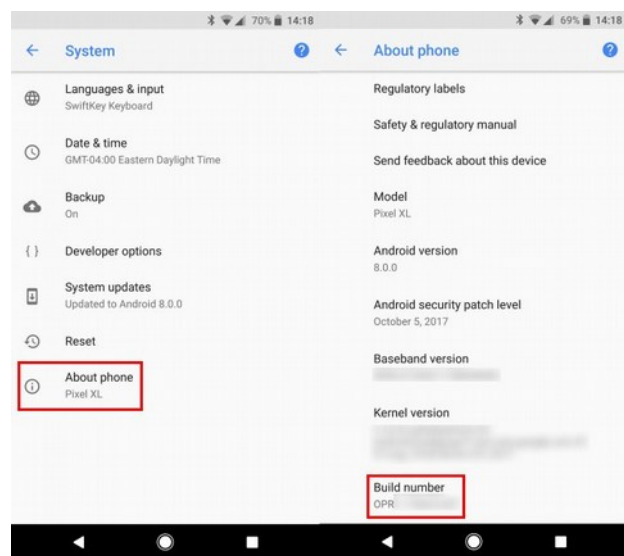
6. Additional Comments

Commands can be given at the same time to get simultaneous or near simultaneous actions. For example, to make the robot pose and change expression you touch two icons in rapid succession. If you use one hand had to move iPal using  then with the other hand you can choose poses and expressions while iPal is moving.

APPENDIX - enabling USB debugging on an Android tablet

The following procedure will work for most recent tablets. But if it does not work for your tablet then just search on the internet for how to do it for your particular tablet.

On modern Android devices, you'll find USB Debugging in the Developer Options menu, which is hidden by default. To unlock it, go to **Settings** and scroll down to until you see **About** and then select. Then scroll down in the **About** section until you see a **Build number** entry. Tap it 5-6 times and you'll see a notification letting you know that you're now a developer.



Jump back to **Settings**, and scroll back down to the bottom where **About phone** is. You'll see a new entry, **Developer options**. Tap this, and look for **USB debugging** under the **Debugging** header. Hit the slider to enable it (in the picture below it is off), and confirm Android's warning that you understand what this feature is for.

